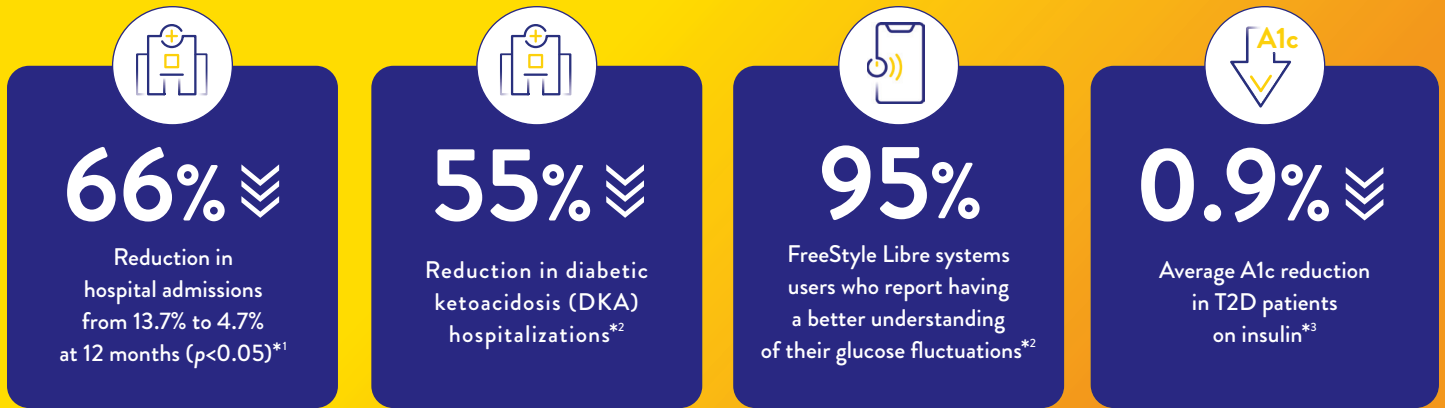


Clinical evidence supports the use of FreeStyle Libre personal CGM systems for patients with Type 1 and Type 2 diabetes



Introducing the FreeStyle Hospital Discharge Program

Abbott's complimentary program provides hospitals with sensor starter kits to help eligible patients manage their diabetes following discharge. The Abbott CGM starter kit gives patients an opportunity to try a FreeStyle Libre 2 system or FreeStyle Libre 3 system at no cost.†

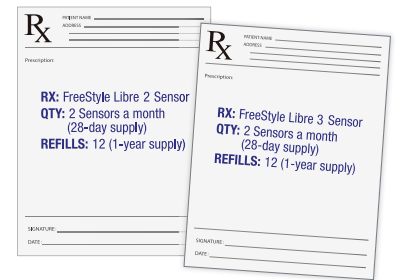
EACH PATIENT WILL RECEIVE ONE CGM STARTER KIT:



One (1) FreeStyle Libre 2, FreeStyle Libre 2 Plus or FreeStyle Libre 3 sensor



Getting Started Guide



Follow up Rx for sensor (include FreeStyle Libre 2 or FreeStyle Libre 3 reader, if needed)



The FreeStyle Libre 2 and FreeStyle Libre 3 systems are indicated for use in people with diabetes age 4 and older. The FreeStyle Libre 2 Plus sensor is indicated for use in people with diabetes age 2 and older.

*Data from this study was collected with the outside US version of the FreeStyle Libre 14 day system. FreeStyle Libre 2 and FreeStyle Libre 3 systems have the same features as FreeStyle Libre 14 day system with optional real-time glucose alarms. Therefore the study data is applicable to both products. †This program, including the offer for one FreeStyle Libre systems sensor (the "Program"), is void where prohibited by law. Only patients who meet all FreeStyle Libre 2, FreeStyle Libre 2 Plus and FreeStyle Libre 3 product indications for use and who are being discharged from a hospital participating in the Program ("Hospital") are eligible. The FreeStyle Libre 2, FreeStyle Libre 2 Plus and FreeStyle Libre 3 sensors are only available with a valid prescription. Participating pharmacies are subject to change without notice. The free sensor is provided as a sample and cannot be sold or submitted to any third party payer for reimbursement. The sensor is not provided as an inducement for future purposes. Offer is non-transferrable and cannot be combined with any similar offer. Each patient may only participate once in the Program. Hospital is responsible for determining eligible patients and providing samples. This Program may be available through other hospitals. Patients maintain the right to select the participating hospital of their choice. Abbott Diabetes Care Inc. reserves the right to modify, rescind, or cancel this Program at any time without notice to you.

1. Fokkert, M. et al. *BMJ Open Diab Res Care* (2019): <https://doi.org/10.1136/bmjdr-2019-000809>. 2. Roussel, R. et al. *Diabetes Care* (2021): <https://doi.org/10.2337/dc20-1690>.

3. Kröger, J. *Diabetes Therapy* (2020): <https://doi.org/10.1007/s13300-019-00741-9>.

See next page for Important Safety Information.

Requesting CGM starter kits and patient literature

1. Contact your Abbott Diabetes Care Hospital Sales Specialist to request a shipment of starter kits.
2. A starter kit shipment request form will be emailed to the designated provider for electronic signature via DocuSign.
 - The designated provider must have a specialty that is aligned with the FreeStyle Libre 2 and FreeStyle Libre 3 system labeling.
3. Starter kits and corresponding literature will be shipped directly to the hospital.
4. Delivery confirmation documents (packing slip/T&Cs) are emailed to the same designated provider for electronic signature (via DocuSign) approximately one week after shipment.
5. When inventory runs low, contact your Hospital Sales Specialist to place a new order.

Discharge program checklist

- Identify eligible patients to receive a starter kit, i.e., those who are aligned with product labeling and are ideally commercially insured.[†]
- Provide patient with one CGM starter kit: 1 sensor (FreeStyle Libre 2, FreeStyle Libre 2 Plus or FreeStyle Libre 3) and Patient Discharge Packet.
- Review the discharge packet getting started materials with the patient.
- Recommend patient enroll in the MyFreeStyle program (StartMyFreeStyle.com) for additional education and support.
- Discharging provider to record in the EHR system that patient was started on/provided with a FreeStyle Libre 2, FreeStyle Libre 2 Plus or FreeStyle Libre 3 sensor sample.
- Discharging provider to prescribe sensor refills (and reader, if needed) for patient to fill at their local pharmacy.[‡]
- Discharging provider to set up follow-up care reminders in the EHR system for the patient and outpatient/transitional care provider.
- Remind patient to fill sensor prescription and follow-up with their outpatient/transitional care provider.



[†]This program, including the offer for one FreeStyle Libre systems sensor (the “Program”), is void where prohibited by law. Only patients who meet all FreeStyle Libre 2, FreeStyle Libre 2 Plus or FreeStyle Libre 3 product indications for use and who are being discharged from a hospital participating in the Program (“Hospital”) are eligible. The FreeStyle Libre 2, FreeStyle Libre 2 Plus and FreeStyle Libre 3 sensors are only available with a valid prescription. Participating pharmacies are subject to change without notice. The free sensor is provided as a sample and cannot be sold or submitted to any third party payer for reimbursement. The sensor is not provided as an inducement for future purposes. Offer is non-transferrable and cannot be combined with any similar offer. Each patient may only participate once in the Program. Hospital is responsible for determining eligible patients and providing samples. This Program may be available through other hospitals. Patients maintain the right to select the participating hospital of their choice. Abbott Diabetes Care Inc. reserves the right to modify, rescind, or cancel this Program at any time without notice to you. [‡]Participating pharmacies are subject to change without notice.

Important Safety Information

FreeStyle Libre 2 and FreeStyle Libre 3 systems: Failure to use FreeStyle Libre 2 or FreeStyle Libre 3 systems as instructed in labeling may result in missing a severe low or high glucose event and/or making a treatment decision, resulting in injury. If glucose alarms and readings do not match symptoms or expectations, use a fingerstick value from a blood glucose meter for treatment decisions. Seek medical attention when appropriate or contact Abbott at 855-632-8658 or <https://www.FreeStyle.abbott/us-en/safety-information.html> for safety info. The sensor housing, FreeStyle, Libre, and related brand marks are marks of Abbott. Other trademarks are the property of their respective owners.